

# WESTON TURVILLE TIMES

*Spring 2024*



*multi award winning agent*



Florence Nightingale Proud Sponsors  
HOSPICE CHARITY

**01296 625 100**

[www.harpersestateagents.co.uk](http://www.harpersestateagents.co.uk)

## Message from the Editor

---

I hope you and your family have had an enjoyable winter and are starting to feel that spring is in the air marking the return of the sun. The first new shoots of spring are starting to appear, daffodils and snowdrops popping up out of the cold hard ground.

There is lots going on in the parish this spring. In this edition you will find information of upcoming events, perhaps most important for our younger community is the Easter Eggstravaganza event which our parish councillors are organising. There will be a free Easter Egg for all those who complete the Easter hunt trail. Many traditional games to play as well as refreshments available to buy from the lovely Steve at The Coffee Stop who will be in attendance.

Please remember to mention us if you use any of the advertisers listed within this magazine so they know it is worthwhile continuing to advertise with us. This provides the income stream to allow this magazine to be printed and provided free of charge.

*Cllr Laura Cook, Editor*

---

*Contributions are welcomed subject to space and the Editor's decision on suitability. The deadline for the next issue is 30<sup>th</sup> April 2024. We reserve the right to edit all articles.*

The Weston Turville Times is a community magazine for the parish of Weston Turville. It is published quarterly by Weston Turville Parish Council and distributed free of charge to every house and many businesses in Weston Turville. Past editions can be found on the Parish Council website - [www.westonturville-pc.gov.uk](http://www.westonturville-pc.gov.uk).

*The views expressed in articles are not necessarily the views of the editorial team or the Parish Council. We do not endorse any of the suppliers advertising in the magazine.*

### Published by

Weston Turville Parish Council  
Village Hall, School Approach, Weston Turville  
HP22 5RW

Tel: 01296 612838  
[clerk@westonturville-pc.gov.uk](mailto:clerk@westonturville-pc.gov.uk)

### Editor

[c/o clerk@westonturville-pc.gov.uk](mailto:c/o_clerk@westonturville-pc.gov.uk)

### Advertising

Michael Foote  
[wt-advertising@westonturville-pc.gov.uk](mailto:wt-advertising@westonturville-pc.gov.uk)

### Printed by

Buxton Press, Palace Road, Buxton SK17 6AE

### Advertising rates for one year:

Whole Page	£250
Half page	£125
Quarter page	£65

# Parish Council News



## Chair's Report



Hello, I'm Rachel Blackmore, one of your Parish Councillors, and I'm delighted to have recently taken on the role of chairperson. We are grateful to have lived here for a few decades and raised our family here in this beautiful place. We have met many of you over the years at the school gate, Jigsaw, Youth Café, church, the Manor House cream teas and soup lunches, the climate/ community/ environment group CAWT and at WTWT (Weston Turville Wells for Tanzania) Barn Dances in the Village Hall (one planned for March 9<sup>th</sup>, details in this magazine). We look forward to meeting many more of you over our projects and fun events together as a parish.

Great work has been done by our Parish Council in previous years. Huge gratitude to Martin Jarvis, Mandi Simons, Georgie Fincham, Martin Watson and the rest of the team involved in upgrading the recreation ground, running events for all ages, increasing biodiversity, and managing our local environment to keep us all safe and much more. You can see a lot of what is happening in this magazine. I'm looking forward to continuing working with our wonderful parish clerk Sarah, and equally wonderful assistant Fran, and our vibrant team of councillors. Do let us know your thoughts on things we can do together and come along to see us at one of our meetings or in the parish office or round and about WT. If you would like to learn more and perhaps join us on the Parish Council, there are currently vacancies. If you would like to meet me to discuss any issues or just say hello I would be very happy to do that, please contact me via [rblackmore@westonturville-pc.gov.uk](mailto:rblackmore@westonturville-pc.gov.uk) or 07792 475094.

Cllr Rachel Blackmore

**Consultations** – thank you so much to everyone who wrote in regarding the civic insignia and white gates consultations. We're pleased to say we will be proceeding with both projects.

### **S106 funded projects**

Weston Turville has s106 funds allocated to it from the recent developments built in the area. There is very strict criteria for use of this funding and it can therefore only be used for sport or leisure facilities, it cannot be used for roads, footpaths, defibrillators etc. If anyone has any suggestions for leisure facilities needed within the parish please email the Clerk. Current projects ongoing include:

**Outdoor Table Tennis Table** – this has been ordered and will be installed in April

**Gym Equipment Trail** – the Council is currently going through the tender process to procure this equipment and we hope to get it installed before the start of the summer.

**Trees and Wildflowers** – During January a group of hardy volunteers braved the cold weather and planted 8 new trees in the recreation ground. Starting from near the picnic area they are Walnut, Paper Birch, Lime, Beech, Red Acer, Silver Birch, Tulip and Sweet Chestnut. We are very grateful to the volunteers and guidance provided by Chiltern WildBelt Project. An area of the field has been sown with yellow rattle seed to suppress the grass growth in order to create a wildflower meadow by the tennis courts.



The Council is working with the Chiltern Society WildBelt Project on this and other areas of wildflowers around the parish.

**Village Hall and Car Park** – a number of improvements are planned for the coming year:

- Works will be carried out to the hall car park over the Easter school holidays to repair potholes and improve drainage.
- The hall already has a large solar panel array on the roof and the next stage will be to install a battery to store power generated.
- The Parish Council is working with Bucks Council to have EV chargers installed in the car park.
- A planning application is being submitted to repurpose part of the building as a café.

**Rights of Way – stiles and gates** The Parish Council is working with the ramblers association to replace some of the older stiles with gates in order to make the rights of way network more accessible to all. The first stiles will be replaced during February and are located in the fields between Wendover Road and Worlds End Lane.

**Community events** - The Parish Council is organising a number of community events, including a family Easter fun day, litter picks, D Day 80th commemorations and children's activity days in the summer. Please come along to support these events and meet your parish councillors.

**Parish Council Meetings** – All local residents are welcome to attend meetings of the council and its committees to observe and at the start of each meeting there is a chance for residents to raise any issues with the Council. The list of meeting dates can be found on the website or noticeboards. Meetings are held in either the Village Hall or the parish meeting room, adjacent to the hall. Please see our website for agenda details or contact the Clerk.

### **Contacting the Parish Council**

Email: [clerk@westonturville-pc.gov.uk](mailto:clerk@westonturville-pc.gov.uk) Tel: 01296 612838

Weston Turville Parish Council, Village Hall, School Approach, Weston Turville HP22 5RW  
Parish councillor contact details can be found on our website or noticeboards

**Weston Turville Parish Council has signed up to the Civility and Respect Pledge and takes the wellbeing of its members and staff very seriously.**

**Intimidation, abuse, bullying and harassment of councillors and council staff, in person or online, whether by councillors, staff, or members of the public, will not be tolerated.**

**Should anyone feel that the activities of Councillors have breached the Code of Conduct, then those matters should be reported to and will be investigated by the Monitoring Officers at Buckinghamshire Council. Weston Turville Parish Council is prevented in law from undertaking its own investigations and implementing sanctions against councillors.**

## **The Paddocks Community**

One may say COVID brought us together. Not on its own but combined with the warm spring and summer of 2020. It could be true, but I prefer to believe it was meant to be.

The location and the houses were what attracted us to move here. What we were not aware of was that we were in for a treat. A lovely community of warm, funny, and sociable people and dogs.

It all started with Thursday's NHS clapping session, which was a good opportunity to stay outdoors and enjoy the good weather while meeting the neighbours, always keeping social distance, of course. And worth mentioning, one of our neighbours is a great DJ; do the math!

But the truth is, I feel so blessed to live in this wonderful community with whom we can share our precious time. From dog walks through the fields in the summer to gatherings to celebrate the end of the year, the new year, birthdays, and any other excuses we can find, there are always people sharing and celebrating together.

In days where our lives have become so fast paced and so virtual, it is comforting to know you can knock on your neighbour's door to borrow a cup of sugar and end up staying for a cup of tea or a glass of wine. Did I mention that most of us know each other by name?

I feel lucky, and when my heart hints that we should move to sunnier pastures, the warmth of our community is certainly what holds me back.

*Paula L Estrela*





# Weston Turville Repair Café



Can you help?

Climate Action Weston Turville (CAWT) are planning to start a Weston Turville community Repair Café at the Village Hall in the autumn this year.

**We are looking for volunteers who can repair:**

**Electrical goods**

**Knives (sharpeners)**

**Furniture**

**Clothes and fabric items**

**Bikes**



If you have these, or any other useful skills enabling us to repair other items, do let us know by emailing- Rachel Blackmore - [racheljblackmore@gmail.com](mailto:racheljblackmore@gmail.com)



**u3a** learn,  
laugh,  
live

## Weston Turville

Thanks to the efforts of all our group leaders 2024 looks like being another busy year for all our 400+ members. We have around 40 activity groups varying from bridge to bird watching and from walking to wine appreciation. All these are guided by enthusiastic group leaders who will have regular contact with those taking part in the group's activities.

Additionally, we have a monthly general meeting with refreshments, the chance to hear from some group leaders as well as a presentation from a guest speaker. These are on the fourth Thursday of each month starting at 2.30pm at Aylesbury Rugby Club in the village.

Prospective new members are welcome.

Interested? Then contact Simon Evers on 07859 221109,  
email [membership@wtu3a.org.uk](mailto:membership@wtu3a.org.uk) or visit our website:  
[www.wtu3a.org.uk](http://www.wtu3a.org.uk)

# ***What would YOU like to see at Weston Turville Village Hall?***

We are looking to improve our hireable village hall with equipment/resources for the local community.

What would you like to see at the hall?

What would make it more desirable for you to hire?

What groups/classes could you start up with equipment we buy?

Would you be interested in a regular community group?

We would appreciate any feedback/ideas please email-

[assistant.clerk@westonturville-pc.gov.uk](mailto:assistant.clerk@westonturville-pc.gov.uk)



## **WESTON TURVILLE VILLAGE HALL**

Spacious main hall with disabled facilities

Sound system (with hearing loop)

Pull-down projector screen

Separate meeting room also doubles as a catering/bar area

Kitchen with cooker and microwave

Car Park with easy access

For availability click on the 'Online Booking' page on our website -  
[www.wturvillehall.weebly.com](http://www.wturvillehall.weebly.com) or call 07470487617

Registered Charity 268961



# Climate, Environment & Community Sustainability in Weston Turville

The Parish Council is working in partnership with Climate Action Weston Turville (CAWT) on sustainability matters, below is a snapshot of our current joint working initiatives.

## Energy

The village hall has a large solar panel array on the roof which generates electricity for the hall with any surplus exported to the grid. The Parish Council has obtained s106 funding to install batteries at the hall to allow the energy produced to be stored and used when the panels aren't generating power.

The Parish Council is working with Buckinghamshire Council to get electric vehicle chargers installed in the village hall car park, it is hoped these will be available by the end of the year but this is dependent on Bucks Council procurement processes.

## Community

Warm Spaces enables people to save energy at home whilst coming out for company. This is held on Tuesdays in The Chandos Arms.

## Sustainability

The Parish Council has provided a grant to CAWT to cover some of the costs to run a Repair Café monthly at the village hall, it is anticipated this will start in October this year. Please see call for repairers on page 6.

## Biodiversity

The Parish Council is working with CAWT volunteers and the Chiltern Society WildBelt project to plant trees and wildflowers at the recreation ground and around the village. Eight trees have been planted in the recreation ground in January. Our WT Neighbourhood Plan is being updated to give us more control over developments and protect our biodiversity. If you would like to get involved with this update contact Cllr Laura Cook

## Awareness raising

CAWT have held 3 hour workshops called 'Climate Fresk' to gain awareness of the interconnected factors involved in the climate and ecological emergency. If you are interested in attending a future one please contact Rachel Blackmore on [racheljblackmore@gmail.com](mailto:racheljblackmore@gmail.com) or message on 07792 475094.

CAWT have a website and Facebook page with information and guidance. The PC Chairman and Clerk will be attending carbon literacy training in June.



# J Brown Funeral Services

## Independent Family Funeral Director

[Jbrownfuneralservices.co.uk](http://Jbrownfuneralservices.co.uk)

Serving Wendover, Aylesbury, Weston Turville, Amersham,  
and all surrounding areas.

Award winning Funeral Director Jason Brown has over 30 years  
experience and is here to assist you with making funeral arrangements,  
be they traditional, green or totally bespoke.



### Amersham

67 Woodside Road, HP6 6AA  
**01494 727474**

### Wendover

23 High Street, HP22 6DU  
**01296 312222**

# Ashridge

HOME CARE



## Providing Outstanding Home Care

Call for a friendly chat on 01494 917344  
or visit [ashridgehomecare.co.uk](http://ashridgehomecare.co.uk)

Ashridge Home Care specialises in providing highly personalised one-to-one care that enables people to remain in the comfort of their own home. It is one of the few care companies to offer both around the clock live-in care or visiting hourly care.



# *The Glebe Field.*

The Parish Council is continuing to work with conservation groups to implement the habitat management plan commissioned from Future Nature, a subsidiary of Bucks Berks and Oxon Wildlife Trust.



Clearance of scrub to enable wildlife surveys took place in January and February and we thank the volunteers and Chiltern Society Community WildBelt Project for their hard work and assistance. The Parish Council will be arranging formal wildlife surveys to be carried out but are very keen for the local community to get involved. The Chiltern Society will be recruiting local volunteers to carry out a British Trust for Ornithology Breeding Bird survey from April to establish

which birds currently use the site. Through the WildBelt project, funding for training will be offered. Work has also been carried out along the access path to improve habitats for birds and insects to feed, this has been primarily creating a more diverse age structure of scrub and creating open areas for insects to and birds to feed. This is in keeping with the prescribed management plan.

The right of way across the field will have further improvements made once ground conditions improve.

The next stage will be to set up a 'Friends of' group for interested residents who are passionate about The Glebe. Friends groups represent the local community and help by advising and determining what kinds of improvements could be made. They can help to gain funding for certain projects and most friends groups also get 'hands on' and help to carry out a range of activities. For example, bulb planting, scrub management, wildlife surveys and litter pick days. The Community WildBelt project in partnership with the parish Council is keen to include as many local people as possible whatever their abilities. If you would like to get involved, please contact [lcook@westonturville-pc.gov.uk](mailto:lcook@westonturville-pc.gov.uk)

Contact for the Community WildBelt project is [amandabarnicoat@chilternsociety.org.uk](mailto:amandabarnicoat@chilternsociety.org.uk)  
[www.chilternsociety.org.uk/community-wildbelt/](http://www.chilternsociety.org.uk/community-wildbelt/)

*Cllr Laura Cook*

# Farming Matters

The United Kingdom is extremely fortunate to exhibit a kaleidoscope of variation and diversity in almost all walks of life. Our ecology benefits from the four distinct seasons, each of which brings opportunities for those who are willing or able to find them. Summer and Autumn bring warmth and the bounty of harvest, providing food to last the long, slow Winter. But what of Spring?



Spring is often considered to be the start of new life. Trees begin to produce buds which become leaves; bulbs throw shoots into the sky to produce brilliant blooms; the grasses strengthen and swell. Birds and animals often choose to have their young in the spring, and all of nature, as one, picks up speed again.

But why does it all happen now? What triggers the change from cold dormancy to vibrant life? The 22nd December last year saw the Winter Solstice: the shortest day of the year. Since then, every day has grown in length, starting with an increase of only a few precious seconds but building steadily through the months, up to a few extra minutes of daylight each day. The additional daylight brings with it more power from the sun to create warmth and give energy to the inactive earth.

It's currently the end of January, and last season's lambs are fat. Soon we will be taking them to the butcher, so look out for them in our pop-up farm shop between now and Easter! The cattle however are still inside the sheds, waiting for the grass outside to start growing. They will be let out into the fields later in the spring. In the recent frost, we took the opportunity to clean out their housing and move the muck out into the



*Clearing out the cattle shed*

field. The ground needs to be frozen for us to do this, otherwise the tractors would make huge ruts in the field or worse, sink! In recent years, it hasn't been cold enough so we were grateful for the chance this time around. The muck will be used as a natural form of fertiliser on the crops later in the year, adding minerals and rich organic matter to the soils, and reducing the farm's reliance on artificial ammonium nitrate.

Due to the enormous amount of rain the country had over the winter (the taps went on in mid-September and have only just been turned off!)

we were not able to plant all of our crops in the Autumn. I know as a farm we are not alone in missing the planting window, and there are still many bare fields around the country showing where the land lies wet. This season, we will need to plant a spring wheat crop- a faster growing variety compared to one planted in the autumn- which we

will do as soon as the ground is dry and warm enough for the tractor to travel and the seed to germinate.

Last week we had our flock of sheep scanned to find out how successful our new ram (called Edward) has been over the winter. I'm pleased to report he's done his job well, and we now have lots of pregnant ewes! Each pregnant sheep has been marked with a small blob of colour on her side to indicate whether she is carrying a single lamb or twins. We're lucky not to have any triplets this year, as three is more than one mother can handle on her own! While they are carrying their unborn cargoes, it is very important for us to feed the ewes correctly. We want each lamb to be big and healthy, but not so big that there are complications at birth. With little left of the winter grass in front of them, all of the ewes are quick to devour the hay we put out for them. Twins require significantly more feeding than a single, so we will split the group up and feed the ones carrying double an extra ration of brewer's barley grains to give them the energy they need.

Lambing will begin on April 1st, and we are running "Lambing Live" tours of the flock to see the lambs being born throughout the month. These tours are extremely popular, so do get in touch early if you'd like to come along!



*Newborn Lamb with mother*

Dates for your diary:

- 24th & 25th February: Pop-Up Farm Shop & Café
- 30th & 31st March: Pop-Up Farm Shop & Café
- April: Lambing Live
- 27th & 28th April: Pop-Up Farm Shop & Café

Contact us on [info@churchfarmbucks.co.uk](mailto:info@churchfarmbucks.co.uk)

Follow @ChurchFarmBucks on Facebook and Instagram

Tom Walton

## Seasoned Logs

Suitable for open fires and log burners

Large builders bag or smaller sack



**Church Farm**

Weston Turville

Tel: 01296 613424



## Being a Parish Councillor Part 2: A Legacy

Those of you who read this magazine may remember that I wrote an article last year on becoming a Parish Councillor. Well this is a follow up.

My previous article obviously did not inspire anyone as no one applied; and since then there have been 2 more resignations meaning the council is now 3 councillors short (at the time of writing).

I left the council for personal reasons having completed 13 plus years volunteering on various parish projects. During covid I had the misfortune to lose over 18 friends, associates and relatives and the scale of this loss made me reevaluate what I was doing and how I was doing it. In completing this re-evaluation process I decided I needed to spend time doing personal things that I enjoyed and to relinquish some of my parish responsibilities. I can say that I am now creating wonderful memories with friends to take me to my senile years!

The re-evaluation process allowed me to look back across some of the projects the Parish Council had completed during my time serving. Some of you may think they are trivial or unnecessary and they don't impact on you or yours but just consider if they had not been done. Here are just some of the things I assisted with: I was one of the original writers of this magazine: I requested and collated articles for it to give you information about events etc locally. I wrote articles 4 times a year for it; I arranged and coordinated the distribution and got volunteers to distribute the magazine to every house in the parish: meaning the magazine could remain free for everyone. I organised and planned the annual village fete and dog show which was a non profit event and was greatly appreciated by those who attended. I also was the lead organiser and/or coordinated other one off celebrations for jubilees, celebrations or commemorations. I took over the organising of the Remembrance Parade on behalf of the council and have watched it grow in importance and size every year. I coordinated the refurbishment of the village hall, updating it with new paintwork, projector screen, sound system, curtains, staging, kitchen, bathrooms, chairs and tables. The electrics have been sorted and some insulation fitted and the windows replaced with double glazing units. I planted bulbs across the parish with another councillor for years giving you the show of daffodils and spring flowers you enjoy every year. I was instrumental in refurbishing the tennis courts so they were usable, I was involved in the design and implementation of the jubilee park with the path, MUGA, skate park, petanque court, play area and picnic areas.

I regularly attended the planning meetings to try and influence the local planning authority in some of their planning decisions. I was the lead councillor in writing the Neighbourhood Plan which took several years and hundreds of hours of consultations to 'make it' legal and effective in planning decisions, which included protecting some of our green spaces. I was instrumental in getting the parish council to name new streets to keep a local connection to the area. My list goes on but you get the idea; my reflections concluded that I can say that I believe I have positively contributed to this parish and

some of my efforts will be in place for many years to come. Other 'projects' are more temporary but fulfilled a need at the time.

So what has all this got to do with you? I am not writing it just to get a pat on the back or to get my name on a board somewhere or even to 'show off' but to encourage you to join in and make your mark on our parish. Leave something of you behind for future generations, knowing that you did something worthy and rewarding. You may not be remembered for it by name next year but what you do will have an impact on those who choose to live here in the future.

The work the parish council does is regulated by law and there are some things it cannot do. Some of it is restricted in how, when and where and some is like 'marmite'- whatever you do will please some and annoy others. But please don't be put off in being involved, the downsides can be irritating and at times bureaucratic, but the results are surely something to be proud of! The council are looking for new councillors but are also requesting help from volunteers on projects such as reviewing the neighbourhood plan, working in the Glebe, bulb planting, being involved in organising village events, litter picking, to name but a few. Some of these take a few hours a year and some a few hours a month but all help to make this parish a better place to live and work.

*Mandi Simons*

# Fix my street

**Got a problem to report?**

**Potholes**

**Pavement issues**

**Street lights**

**Road signs**

**Fly tipping**

**Graffiti**

**Dog fouling**

**and more....**



**Don't wait**

Report them by downloading the app  
or visiting

**[www.fixmystreet.com](http://www.fixmystreet.com)**



# WESTON TURVILLE EASTER EGGSTRAVAGANZA

## FREE EVENT

EGG & SPOON RACE, PIN THE TAIL ON THE BUNNY, BUILD A BUG HOUSE AND MORE.

PLUS A FREE EASTER EGG ON COMPLETION OF THE EASTER TRAIL.

ALL CHILDREN MUST BE ACCOMPANIED BY AN ADULT.

DAY - TUESDAY 2ND APRIL

TIME - 10AM -12NOON

PLACE - WESTON TURVILLE VILLAGE HALL

SCHOOL APPROACH

WESTON TURVILLE

BUCKINGHAMSHIRE

HP22 5RW

**BARN DANCE**  
**AND HOT SUPPER**  
**SAT 9TH MARCH 2024**  
**WESTON TURVILLE VILLAGE HALL**  
**SCHOOL APPROACH WESTON TURVILLE HP22 5RW**

**Live Music from Myckryek**

**ADULTS £15**  
**CHILDREN/STUDENTS £7.50**

Doors Open at 7pm  
 Finish time 10.30pm

\*\*SUPPER AND BAR BY THE CHANDOS PUB\*\*  
 VEGETARIAN AND GLUTEN FREE OPTION AVAILABLE

A RAFFLE WILL ALSO BE HELD WITH AMAZING PRIZES TO BE WON

TICKETS AVAILABLE FROM RACHEL BLACKMORE:  
 TEXT 07792 475 094 OR EMAIL RACHELJBLACKMORE@GMAIL.COM

RAISING FUNDS FOR WESTON TURVILLE WELLS FOR TANZANIA

## What's on in your local area

### March

9 <sup>th</sup>	Charity Barn Dance, 7pm at the Village Hall
12 <sup>th</sup>	Parish Council Finance, Governance and Personnel Committee meeting
14 <sup>th</sup>	Parish Council Planning & Highways Committee, 7pm
21 <sup>st</sup>	Parish Council Meeting

### April

2 <sup>nd</sup>	Family Easter Event, 10am at the Village Hall
5 <sup>th</sup>	Street Food at the Village Hall
8 <sup>th</sup>	CPR and Defibrillator training 7-9pm Village Hall
11 <sup>th</sup>	Parish Council Planning & Highways Committee, 7pm
11 <sup>th</sup>	CPR and Defibrillator training 7-9pm Village Hall
18 <sup>th</sup>	Parish Council meeting, 7pm
18 <sup>th</sup>	Annual Parish Meeting, 7.30pm
26 <sup>th</sup>	Historical Society
27 <sup>th</sup>	Parish Litter Pick, 10am at the Village Hall

### May

3 <sup>rd</sup>	Street Food at the Village Hall
9 <sup>th</sup>	Parish Council Planning & Highways Committee, 7pm
16 <sup>th</sup>	Parish Council meeting, 7pm
31 <sup>st</sup>	Historical Society

### Regular Events

- Monday afternoons – Coffee Van at the Village Hall
- Tuesday afternoons – Warm Spaces at the Chandos
- Second Saturday monthly – Repair Café, St Michael's Church, Aston Clinton 9am - 12noon
- Thursdays – Wendover Market
- First Friday of the month, April – October – Street Food event at the Village Hall

**Advance Dates for your diary-** 6<sup>th</sup> June - D Day 80<sup>th</sup> anniversary

### **Local events and special occasions**

Please let us know, well in advance, of any forthcoming events that you think fellow residents and neighbours will want to know about. If the event is non-commercial and can be classed as a community event we will be very pleased to include it free of charge. Please email [clerk@westonturville-pc.gov.uk](mailto:clerk@westonturville-pc.gov.uk)

## Community First Responders for Weston Turville

Weston Turville is fortunate to have 2 Community First Responders in the village responding on behalf of South Central Ambulance Service.

Josh and Michala both live in the village and have been CFR's for a number of years. The role of the CFR is to make a life-saving contribution to patients in their local community who dial **999**, the hope is that we can be there within the first crucial couple of minutes should it be needed. All CFR's are volunteers who undertake training to be able to help those in need and the minimum commitment is 20 hours a month.



CFRs are trained to deliver life-saving skills such as the use of an automated external defibrillator (AED), basic airway management and oxygen therapy, and cardiopulmonary resuscitation, or CPR.

Because CFRs only respond to emergencies in the area where they live or work, they can arrive at the scene shortly before an ambulance gets there. By being able to start life-saving medical treatment earlier, CFRs really do help save more lives.



We are pleased that recently we have been able to deliver CPR sessions to local residents via the Warm Spaces Group held at the Chandos and will be running further sessions at the Village Hall in April.

As a charity, we receive no funding from the NHS, we are only able to function via charitable donations. Please take a look at the website for more information: [www.scas.nhs.uk/what-we-](http://www.scas.nhs.uk/what-we-do/community-first-responders/)

[do/community-first-responders/](http://www.scas.nhs.uk/what-we-do/community-first-responders/)

If you see our car driving through the village then please give us a wave!

Josh and Michala



# CPR & DEFIB Training Course.



## HELP SAVE LIVES.

A 90 MINUTE LONG SESSION  
TEACHING YOU HOW TO DO CPR AND  
TO LOCATE AND USE A DEFIBRILLATOR  
BY SCAS COMMUNITY FIRST  
RESPONDERS.

Dates- Monday 8th April & Thursday 11th April

Time - 7-9pm

Location- Weston Turville Village Hall

Limited spaces available.

Please email Francesca to book your place-  
assistant.clerk@westonturville-pc.gov.uk



## Weston Turville Allotment Association



It's the place to be, enjoy the great outdoors

Plots available for immediate viewing, located in Church lane.

Contact: [wtacommittee@gmail.com](mailto:wtacommittee@gmail.com)



HillierHopkins

Chartered Accountants  
and Tax Advisers



## A helping hand to keep you on track

Friendly expertise for business owners. For advice on bookkeeping, accounts, tax, customs & excise and business advisory, talk to us today.

0330 024 3200  
[hillierhopkins.co.uk](http://hillierhopkins.co.uk)

Watford London Milton Keynes

Independent  
member of



Create your bespoke  
Xmas gift hamper!

Buckmoorend  
farm shop butchery kitchen



Browse our Xmas  
display in store now!

Order your turkey  
& home reared  
Christmas Meats  
while stocks last!

Chequers Estate | HP17 0UT  
Tuesday - Sunday 10am-4pm  
[www.buckmoorendfarm.co.uk](http://www.buckmoorendfarm.co.uk)

## “JOB DONE GARDENING”

From the first grass cut to continued garden maintenance (weekly, fortnightly, monthly or ad hoc basis).

We are a team of ladies who will transform your garden in no time and will continue to call as regularly as you want us to

*LET US DO THE HARD WORK  
AND LEAVE YOU TO DO THE  
POTTERING!*

**PLEASE CALL ALISON  
PROBETS ON 07754 207258**



# BERTIE

AND FRIENDS BUCKS

Bertie and Friends Bucks is a professional pet sitting and dog walking business based in Weston Turville.

Email - [bertieandfriendsbucks@gmail.com](mailto:bertieandfriendsbucks@gmail.com)

Phone - 07841699873



#bertieandfriends\_bucks

[www.bertieandfriendsbucks.co.uk](http://www.bertieandfriendsbucks.co.uk)

FULLY INSURED

FULL DBS - CANINE FIRST AID TRAINED

theWI  
INSPIRING WOMEN

1915 FOR 100 YEARS 2015

The WI is the largest voluntary women's organisation in the UK. It plays a unique role in supporting and enabling women of all ages to meet in the local area, develop new skills and share ideas. There is also the opportunity to discuss issues that matter both on a national and local level. How much you get involved is entirely up to each person.

The Weston Turville WI branch welcomes women of all ages and backgrounds to our friendly local group. For further information, please contact [westonturvillewi@gmail.com](mailto:westonturvillewi@gmail.com)

# RJW Carpet & Upholstery Cleaning Ltd

A Small Family Run Business Cleaning  
Carpets and Upholstery at a Reasonable  
Price

For A Cleaner Home, Just Pick Up The  
Phone



For A Free No Obligation Quote Call Tony On  
01296 482536 07850 130536  
[rjwcarpets@yahoo.co.uk](mailto:rjwcarpets@yahoo.co.uk)



Matt Raden Podiatry

## Expert care for your feet and lower limbs.

Professional, effective and personalised  
treatment call **01296 872809** or visit  
**[mattraden.co.uk](http://mattraden.co.uk)**

General Podiatry | Foot Pain | Sports Injuries  
Toenail Surgery | Diabetic Foot Care | Home Visits

2 Main Street, Weston Turville, Aylesbury, HP22 5RR



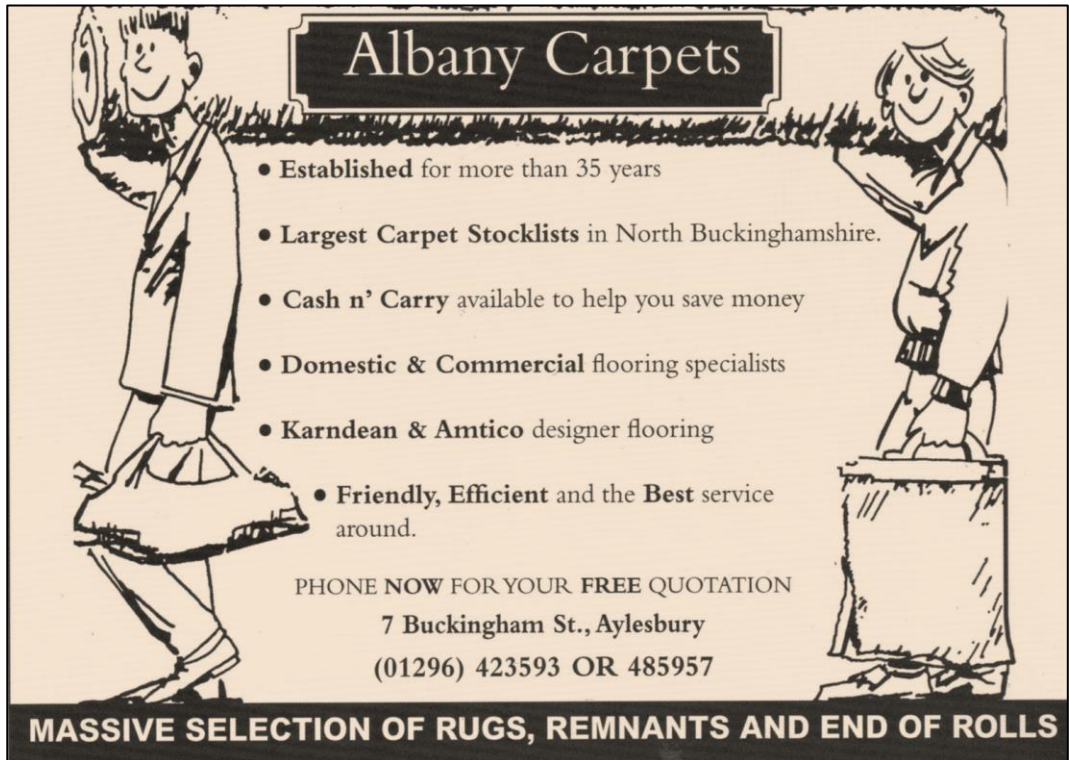


# WESTON TURVILLE LUNCHEON CLUB

We meet at 12.30pm at the **CHANDOS ARMS**  
every two weeks.

Please come and join us, meet new and old  
friends and enjoy yourself.

For further information, call **Mary Sheppard** on  
**07791485919**



**Albany Carpets**

- Established for more than 35 years
- Largest Carpet Stocklists in North Buckinghamshire.
- Cash n' Carry available to help you save money
- Domestic & Commercial flooring specialists
- Karndean & Amtico designer flooring
- Friendly, Efficient and the Best service around.

PHONE NOW FOR YOUR FREE QUOTATION  
7 Buckingham St., Aylesbury  
(01296) 423593 OR 485957

**MASSIVE SELECTION OF RUGS, REMNANTS AND END OF ROLLS**



# *Unveiling a Greener Future: Weston Turville School Council Launches Eco-Friendly Project*

Dear Weston Turville Residents,

We are thrilled to announce the launch of an exciting initiative at Weston Turville CE School. The newly formed School Council has just embarked on a journey towards sustainability with our brand-new green project. We are eager to share our plans with the community and seek your support in making our school and community more eco-friendly.

## **The Vision:**

Our School Council is passionate about fostering a sense of environmental responsibility among students and the entire community. Our goal is to create a school environment that not only educates but also inspires sustainable practices.

## **Key Components of the Project:**

1. **Green Infrastructure:** We aim to implement green infrastructure within the school premises. This includes the installation of more recycling bins, energy-efficient lighting and water conservation measures. We believe these changes will not only reduce our environmental impact but also serve as a valuable educational resource for our students.
2. **Educational Initiatives:** The School Council is planning a series of educational programs to raise awareness about environmental issues and promote eco-friendly habits. This includes classroom discussions, guest lectures, and interactive activities to engage students in the importance of sustainability.
3. **Children Involvement:** We strongly believe in the power of participation. The School Council will encourage all pupils at school to actively contribute to the eco-friendly initiatives, fostering a sense of ownership and pride in creating a green school environment. This includes pupil-led projects, green clubs, and the establishment of a school garden.
4. **Community Engagement:** Our project extends beyond the school gates. We are excited to involve the entire Weston Turville community in our green journey. Look out for upcoming workshops and events where you can learn more about sustainability practices and how you can contribute to our collective effort.

## **How You Can Support:**

We invite each member of the Weston Turville community to join us in making our school greener. Here's how you can get involved:



1. **Volunteer Opportunities:** We will be looking for volunteers to assist with various aspects of the project, from setting up recycling stations to participating in community clean-up events.
2. **Idling Engines:** We will be campaigning against people sitting in cars with idling engines and helping to educate those who continue to do this really harmful activity.
3. **Share Your Ideas:** Have creative ideas for making our school more eco-friendly? We would love to hear from you! Share your suggestions and be a part of shaping the future of our school.

Together, we can make Weston Turville CE School a shining example of sustainability and environmental stewardship. Let's work hand in hand towards a greener future for our children and our community.

Yours Sincerely,  
Weston Turville CE School Council




### **Did you know?**

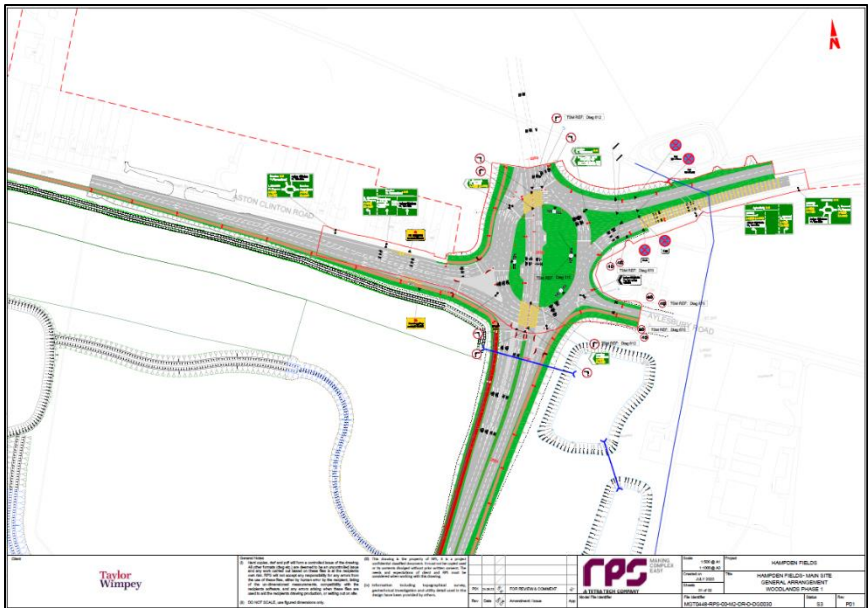
**One minute of a car engine idling produces enough emissions to fill 150 balloons!**

**Switching off your car engine when parked is a simple way we can help clean the air we breath.**

**Children are especially vulnerable to the effects of air pollution. Please do not leave your car engine idling in the village hall car park - let's help keep our school children healthy**



# Hampden Fields Update



Hampden Fields have provided the following update on the Woodlands roundabout. The dates are subject to planning, and timescales may vary depending on this process.

- Approval on the design code for the Woodlands roundabout is expected late February 2024.
- Upon approval of this Design code, the reserved matters planning application for the Woodlands roundabout can be progressed, with consent expected to be granted in June 2024.
- Once consent is granted, a contractor will be appointed for works to the Woodlands roundabout in July / August 2024.
- Planning permitted, it is expected that works will start on the Woodlands roundabout in September 2024 and have the roundabout open to traffic in Summer 2025.
- Once works start, the A41 / Woodlands roundabout will remain open to traffic but with an interim layout; some of the roundabout will be closed to traffic until the Eastern Link Road (South) is constructed.

Taylor Wimpey want to assure local residents that they are committed to keeping disruption to a minimum during the construction of the roundabout, as well as the wider development. A Construction Management Plan (CMP) and a Temporary Traffic Management Plan (TTMP) will both have to be submitted and approved by Buckinghamshire Council before the construction works can commence.

# P. KERNAN TREE SURGERY



All aspects of tree work undertaken.  
Hedges maintained. Fully qualified-Fully insured.  
Local authority approved: Free estimates.  
Firewood for sale.

**Tel: 01296 330501 Direct: 07763 073663**

94 Tring Road, Wendover, HP22 6NX

[www.pkernantreesurgeons.com](http://www.pkernantreesurgeons.com)

[patrick.kernan1@gmail.com](mailto:patrick.kernan1@gmail.com)



## Chris at Cathy's

Hairdressing

3 New Road  
Weston Turville  
HP22 5RE

Open Tuesday, Thursday,  
Friday and Saturday

Phone: 07423 057871  
or 01296 613763

## JAZZERCISE

### FITNESS FOR EVERYONE



Bedgrove Infant School  
Tuesday, Wednesday,  
Thursday 7pm

Jubilee Hall, Bierton  
Sunday 9.30am & 10am

"Jazzercise is the most fun way to keep fit and make new friends. I love how motivational the instructors are"



### BOOK YOUR FREE TRIAL NOW!

 [www.jazzercisebbh.com](http://www.jazzercisebbh.com)  
 [jazzercise1@hotmail.co.uk](mailto:jazzercise1@hotmail.co.uk)  
 Call Keri on 07900 987230  
 @JazzerciseBedsBucksHerts





# THE **GYM** AT **HALTON**

## Start training today

We are open and welcoming new members at 'The Gym at Halton'. Located at the beautiful Halton Tennis Centre, our gym benefits from outdoor training areas and plenty of equipment.

It's simple and easy to join - enquire today!

Our priority is to provide a safe and welcoming gym, so membership is currently restricted to 400 members.

To arrange a visit, please contact Camilla at [camilla@haltonuk.com](mailto:camilla@haltonuk.com) or 07748 596607



**Membership**  
Full: £55  
Student: £30  
(per month)

[thegymathalton.co.uk](http://thegymathalton.co.uk)





## WESTON TURVILLE HISTORICAL SOCIETY

For information and enquiries, contact:  
secretary@WTHSoc.org.uk

The Historical Society hopes that you all got through the winter vagaries of the weather successfully and had a great Christmas and New Year. When you read this, we should be seeing the first shoots of Spring. The Historical Society is going from strength to strength as we now have just under 100 members. The meetings are well attended with over 70 people coming along on the last Friday of each month. A lot of this interest must go down to the excellent speakers that have been able to come to the meetings and presented very interesting talks. Thanks must go to Tony Irvine, our Chairman, for arranging the interesting and varied programme of talks. We continue to welcome existing members and also any new people that wish to come along to the meetings. You do not have to be a member to attend a meeting as all are welcome.

If you wish to renew your membership or to join the society the fees are £5 for a family membership and £3 for a single membership and the meeting fee of £2 per member and £3 for non-members for the coming year. Doors open at 7:30pm and coffee/tea will be available.

If you have not come to any of our meetings, please come and join us on the last Friday of each month in the Village Hall.

For existing members and non-members, we can recommend that you have a look at our website, [www.WTHSoc.org.uk](http://www.WTHSoc.org.uk). The site contains a great deal of information about the history of Weston Turville, copies of old postcards, links to other relevant historical sites etc.

### **Date for Weston Turville Historical Society Speaker Programme 2024**

<b>Date</b>	<b>Speaker</b>	<b>Title of Talk</b>
March 2 <sup>nd</sup> - Hoping to plan a visit to the Trenchard Museum, RAF Halton		
March 29 <sup>th</sup> Good Friday No Meeting		
April 26 <sup>th</sup>	Neil Rees	King Louis XVIII and the French royal family at Hartwell House
May 31 <sup>st</sup>	Liz Wooley	Subject to be confirmed but may tie-up with a guided walk in June or July
June 28 <sup>th</sup>	Adrian Randall	AGM + Weston Turville Criminality – Pt 1
July and August – No Meetings		
Sept 27 <sup>th</sup> 2024	Siobhan Clarke	The Crown & the Cradle, Royal Babies
Oct 25 <sup>th</sup> 2024	Roy Smart	Another Icarus or Out of Africa

For more information visit [www.WTHSoc.org.uk](http://www.WTHSoc.org.uk)



Suppliers and installers of the highest quality  
Windows, Doors, Orangeries &  
Conservatories

Visit our Showroom or contact us for  
a free no obligation quote:  
19 Bridgegate Business Park,  
Gatehouse Way, Aylesbury,  
HP19 8XN

**Tel: 01296 422842**

[enquiries@premwindowsanddoors.co.uk](mailto:enquiries@premwindowsanddoors.co.uk)  
[www.premwindowsanddoors.co.uk](http://www.premwindowsanddoors.co.uk)

## The JoAnn Latus School of Dance



- ❖ Established 24 years
- ❖ Ballet, Tap, Modern and Jazz dance
- ❖ For all ages from 3 years upward
- ❖ Regular examinations & shows.
- ❖ Fully qualified teachers.
- ❖ Local classes held in Weston Turville, Aston Clinton and Stoke Mandeville

[www.jolatusdance.co.uk](http://www.jolatusdance.co.uk)  
01462 769 665 or 07800 518 654

**NOW REOPEN FOR BUSINESS**



## EXTERNAL CLEANERS

*WORKING IN YOUR AREA*

- ✓ WINDOWS
- ✓ GUTTERS
- ✓ FASCIA & SOFFITS
- ✓ PRESSURE WASHING
- ✓ AND MORE...

**CALL FOR A QUOTE**  
**07377 117 606**

[info@dfclean.co](mailto:info@dfclean.co)  
[www.dfclean.co.uk](http://www.dfclean.co.uk)



## The Big Walk

Step up and make a  
difference

Walk for Pace and make a  
huge difference to our  
inspirational children, who  
face mobility challenges  
every single day.

Three routes:  
18, 12 and 6 miles along  
the ancient  
Ridgeway.



21st  
April

Sign up now  
[thepacecentre.org/  
event/  
the-big-walk24/](http://thepacecentre.org/event/the-big-walk24/)

Email [kelly.houghton@thepacecentre.org](mailto:kelly.houghton@thepacecentre.org) [thepacecentre.org](http://thepacecentre.org) [f](https://www.facebook.com/thepacecentre) [@thepacecentre](https://www.instagram.com/thepacecentre)  
Registered office: The Pace Centre Ltd, The Broadway Campus, 100 Woodrow Rd, Aylesbury, HP22 5LE | Company number 2107601 | Registered charity No. 101533



You will be welcome.

Yes, you will be welcome in your Parish Church here in Weston Turville because God loves everyone and wants us to experience this love.

Once upon a time, a long time ago, in a land far from here, a priest suddenly turned up at our house. There had been a misunderstanding. He had come along because someone had told him I wanted to be Confirmed (at that time I did not know what the word meant!). My Mother and I had a chat with him. Please understand my family was not a church-going family. I can only vaguely remember attending one Easter Day service and a Greek Orthodox marriage. Anyway I decided to go to the church just to see what it was like to be in church.

I arrived one Sunday morning. I was handed a pile of books but had no idea about what to use what, when and how. People entered the church and it was obvious most people knew each other. I did not recognise anyone. I only found out when to stand, sit or kneel but watching others.

The choir processed into the church and began singing. We stood up. Then, suddenly, and to my surprise, I suddenly felt 'at home'....I had come home.

Though people had not been particularly welcoming on that occasion God welcomed me.

Give it a go. You will be welcome and hopefully find a home here.

Fr. David.

 **80th Anniversary of D-Day** 

 **June 6th**

**A community event will be held to commemorate  
the 80th anniversary of D-Day.**

**If you would like to get involved, please get in contact with  
us via email-**

**[assistant.clerk@westonturville-pc.gov.uk](mailto:assistant.clerk@westonturville-pc.gov.uk)** 



## How well insulated is my home?

The UK unfortunately has some of the worst insulated houses in Europe according to many reports. Climate Action Weston Turville has been using a thermal camera to assess how effective house insulation is by capturing images of hot and cold spots around houses. Camera pictures help identify areas of heat loss, allowing homeowners to target specific insulation improvements and maximise energy conservation efforts.

Thermal cameras provide a visual representation of temperature variations inside and outside a home. By using these cameras, homeowners can identify areas where heat is escaping, such as poorly insulated roofs, walls, windows, or doors, gaps in insulation or areas with inadequate coverage. Where double glazing is installed sometimes it is without adequate insulation around the window itself, so heat leaks out.

See the pictures below for some examples of heat loss in a roof and no insulation on a wall, shown in darker colours.



These visual insights allow for targeted improvements, ensuring that energy-efficient measures are precisely applied where needed, rather than a more blanket approach, possibly costing a lot more. These could include cheaper improvements such as using draught proofing and sealing gaps, to cavity wall insulation or new double glazing with adequate surrounding insulation.

Identifying and fixing heat loss areas ensures a more consistent and comfortable indoor environment, preventing cold spots and drafts and helping us all with reducing heating costs and helping the planet at the same time.

If you're interested in having some thermal pictures of your home taken to help with better insulation, then please contact George Lait at [georgelait@hotmail.co.uk](mailto:georgelait@hotmail.co.uk).

CAWT would like to thank Kirsty Shanahan from Bucks Community Energy for the loan of the thermal imaging camera. More information and examples are available on various websites including this one: <https://octopus.energy/how-to-use-flir-thermal-camera/>

Ben Brownlee, CAWT

# SPRING BLUEBELLS

- Bluebells are steeped in tradition, myth and legend.
- A wish made when you see the first bluebell open in spring will come true.
- It is said that if you turn a bluebell flower inside out without tearing it, you will win the heart of the one you love.
- To ensure good luck, you should pick a bluebell and conceal it in your shoe, saying: “Bluebell, bluebell, bring me some luck, Before tomorrow night.”
- To dream of bluebells is an ill omen as it indicates that you will have a nagging spouse and in Scotland, there is a legend that if you hear the Bluebell ring it is ringing your death knell and you will die shortly afterwards. Consequently one of the local names in Scotland is 'Death Bell'. Don't let this put you off though!
- It was said that at daybreak, Bluebells would ring to call the faeries back to their homes. The bells are held upright and night and then 'nod' forwards at the first ray of sun, ringing the start of each day.
- Bluebell flowers were traditionally worn on St George's Day.



Other common names from around the country include Wood bells, Fairy flowers, Wild hyacinth, Auld man's bell, Bell bottle, Blue bonnets, Bummuck, Calverkeys, Granfer-Grigglegsticks, Locks and Keys, Pride of the woods, Single Gussies, cookoo's stockings and Ring o' bells.

Be aware that many places sell Spanish Bluebells, which are not native and can be invasive.

Article copied from [www.shireplants.co.uk](http://www.shireplants.co.uk) with thanks.

Photo of Dockey Woods by Mandi Simons



# A gem in our community - Wendover Library

Libraries have always been an important part of my life. Growing up in Colombia, a country affected by internal turmoil and violence at that time, there was a special place that I always loved to visit, as I felt safe there, and it was the library.

I can still remember as if it was yesterday, entering the building with extremely shiny floors and seeing all the books neatly displayed at the back of the room behind a huge floor to ceiling glass window. I remember the friendly face of the lady at the counter who used to help find books for me to read during my lunch break. The books – and the library - helped me during this period of my life to escape the sad realities of my country by transporting me to magical places and into imaginary adventures.

Now – many decades later - I am one of the friendly faces you will find at the counter of Wendover Community Library. Working in the library, as a Customer Service officer, has reinforced my view that libraries play an important role in transforming lives and communities for the better. Not only do they provide access to books and information, but they also offer a broad range of activities and services that contribute to the maintenance of mental and physical wellbeing, social inclusivity, and community cohesion.

Everyone living, working, or studying in Buckinghamshire is eligible for a library membership. Becoming a library member is free and simple, just bring identification and proof of address to the library and we will set up your library card. Library members are able to borrow up to 30 items at a time and renew them up to 4 times. They have access to the digital library, where they can borrow eBooks, eAudiobooks, digital magazines and newspapers for free and access other online resources such as Ancestry and Britannica Library.

Other activities and services that can be accessed at Wendover Community Library include:

**Home Library Service** - the library offers a service to deliver books to the homes of those who find it difficult to get to the library in person due to age, illness or disability, or are unpaid carers.

**Learn My Way Sessions** – the library offers sessions to help people learn how to get online using computers and other devices and become more confident with all things digital. Contact us to book a session.



**OnScreen** – the library shows a wide selection of films to suit everyone, projected on a 120” screen.

**Reminiscence Collections and Memory Bags** – These collections are designed to help families and carers to remember the past and share experiences and can be borrowed by all adult members.

**Blood Pressure Monitors** – Library members can borrow these from the library.

**Support with Council Services** - Access a range of Council services at our Council Access Point within the library. We can help with common queries such as reporting a pothole or ordering a replacement bin.

We also have Knit & Natter sessions, Reading Group Meetings, Coffee Mornings, Bounce & Rhyme, Lego Club, Storytime for Children and more.

If you need help finding library items or accessing our services, visit the library or contact me at [lib-wen@buckinghamshire.gov.uk](mailto:lib-wen@buckinghamshire.gov.uk)

I look forward to welcoming you to the library soon.

*Carol Castellanos*

---



Our treasured Local Village Pub

Proud to offer a family friendly feel service, with homemade freshly prepared food locally sourced.

We offer a full range of dishes including pub favourites which can be found on our website or Facebook page, along with our opening times which may vary seasonally.

We look forward to you dining with us, or pop in for a social drink.

1 Main Street HP225RR [www.thechandosarms.co.uk](http://www.thechandosarms.co.uk) Tel: 01296613532 FB@thechandos

# VILLAGE ENVIRONMENTAL SERVICES DOMESTIC DRAIN SERVICES

Proprietor: Dennis Cook  
Est. 1979

**24/7  
CALLOUT  
SERVICE**

# BLOCKED DRAINS?

# CALL US DAY OR NIGHT

**FAMILY RUN BUSINESS SINCE 1979**

**BLOCKED DRAINS CLEARED • REASONABLE RATES**

**NO EXTRA CHARGE FOR EVENING, WEEKEND  
OR BANK HOLIDAY CALLOUTS**

**CCTV DRAIN SURVEYS**

**FULL PUBLIC LIABILITY INSURANCE**



**07850 635 844**  
**01296 624 221 (MESSAGES)**



# COMPUTER TROUBLE?



## WENDOVER COMPUTERS

Back Street, Wendover 01296 200275

*Do you feel like throwing your computer out of the window?  
fed up with it going slow?  
Crashing or freezing?  
Strange messages popping up?  
or would you just like to upgrade?*



Come and check out the Wendover Computers refurbished station. We stock iPads, iPhones, iMacs, Macbooks, PCs and Laptops



Speed up your slow Computer with an SSD  
Significantly improve the performance of computer by upgrading the old HDD



iPhone & iPad repairs anything from smashed screens to battery replacements



Brand new Laptops  
Windows 11  
SSD

**From £449**

help@wendover-computers.co.uk  
www.wendover-computers.co.uk



## USEFUL CONTACTS

Allotment Association	wtaacommittee@gmail.com
Aston Clinton Surgery	01296 630241
Bedgrove Surgery	01296 330330
Buckinghamshire Council	01296 395000
Citizens Advice	0344 411 1444
Crimestoppers	0800 555 111
Electricity Emergency (UK Power Networks)	0800 783 8838
Environmental Health out of hours	01296 585093
Gas Emergency	0800 111 999
Hospital – Amersham	01494 434411
Hospital – High Wycombe	01494 526161
Hospital - Stoke Mandeville	01296 315000
NHS Direct	111
Transport for Bucks	01296 395000
Village Hall, Weston Turville	07909 485369
Wendover Health Centre	01296 623452
Wendover Library	01296 382415
Weston Turville Combined School	01296 613436
Weston Turville Parish Council	01296 612838
<b>Bucks Council Councillors</b>	
Clr Bill Chapple OBE	01296 426814
Clr Michael Collins	01296 632039
Clr Julie Ward	07766 545236
<b>Support Services</b>	
Age UK	0800 169 6565
Childline	0800 1111
Domestic Violence Hotline	0808 2000 247
Friends of Wendover (weekdays 1-3pm)	01296 622585
Mind	0300 123 3393
Samaritans	116 123



## WHO TO REPORT ISSUES TO

Antisocial behaviour	999 - to report a crime in progress 101 – to report a crime after the fact 01296 383962 Mon-Fri or 0800 999 7677 evenings or weekends – to report concerns about children to Social Services First Response 01296 585858 – to report antisocial behaviour to Buckinghamshire Council
Dog bins (full or damaged)	Buckinghamshire Council - 01296 585858 (please quote the bin reference number eg AV123 which is on each bin)
Environmental Health issues	Buckinghamshire Council - 01296 585858
Fly Tipping	Buckinghamshire Council - 01296 585858
Highways and Rights of Way	Transport for Bucks – 01296 395000 Or <a href="http://www.fixmystreet.buckscc.gov.uk/">www.fixmystreet.buckscc.gov.uk/</a>
Housing and Benefits	0300 131 6000
Litter – missed bin collections, overflowing public litter bins	Buckinghamshire Council - 01296 585858 Or <a href="http://www.buckinghamshire.gov.uk/waste-and-recycling/report-a-missed-bin-collection/aylesbury-vale/">www.buckinghamshire.gov.uk/waste-and-recycling/report-a-missed-bin-collection/aylesbury-vale/</a>
Park and recreation ground	Parish Council – 01296 612838
Planning matters, including enforcement	Buckinghamshire Council - 01296 585858
Street furniture, eg benches, bins, bus shelters, noticeboards	Parish Council – 01296 612838
Streetlights located in Hampden Hall, A413 or A41	Transport for Bucks – 01296 395000 Or report online via <a href="http://www.fixmystreet.buckscc.gov.uk/">www.fixmystreet.buckscc.gov.uk/</a>
Streetlights located in Weston Turville village	Parish Council – 01296 612838
Village Hall	Parish Council – 01296 612838
Water leaks	Thames Water – 0800 714 614



# Christopher Pallet

Professional advice since 1973

CELEBRATING  
**50**  
YEARS

This year we celebrate 50 years selling and letting properties in the village of Weston Turville and the surrounding area.

As a family run business, we have always believed in delivering the highest standards of customer service and making the moving process as stress free as possible.

Book a FREE valuation via our Brand New Website or contact us today to discuss your property requirements.

**[www.christopherpallet.com](http://www.christopherpallet.com)**



## Sales & Lettings

For all your property requirements contact

[wendover@christopherpallet.com](mailto:wendover@christopherpallet.com)

or call 01296 625000